

Visual Story

Adults Only Zone: Relaxed Session 2026

THE GREAT
EXHIBITION
ROAD FESTIVAL

12-1pm | Sunday 7 June 2026

Beit Quadrangle, 2 Prince Consort Road, SW7 2BB

This Relaxed Session is for people over the age of 18. We recommend booking a ticket to come, but we will also be allowing people in without tickets.



To get to the Adults Only Zone, you might arrive here using a **bus** or walking through **Hyde Park** near **Kensington Gore**.

THE GREAT
EXHIBITION
ROAD FESTIVAL

Or you might arrive from or near **South Kensington tube station**.



This is what The Great Exhibition Road Festival will look like.

The Festival opens at **12pm** so may already be busy with visitors.

THE GREAT
EXHIBITION
ROAD FESTIVAL



Walking down Exhibition Road you will reach a **roundabout**. Take a turn at this roundabout to head down **Prince Consort Road**.

THE GREAT
EXHIBITION
ROAD FESTIVAL



There will be traffic and moving vehicles so please be careful when walking down Prince Consort Road. Cross the roads at the designated crossings.

You will see a big yellow school bus. Head towards this. This means that you are really close to the **Adults Only Zone**.

THE GREAT
EXHIBITION
ROAD FESTIVAL



You can go into the bus if you wish. They will be running mindfulness activities with space for up to 20 people starting every 30 minutes all day.

You enter the **Adults Only Zone** through the archway.

THE GREAT
EXHIBITION
ROAD FESTIVAL



If you are uncomfortable with people you don't know approaching you, you can get a wristband to wear or carry.

Red means do not approach me; I will talk to you when I am ready.



On entry you will see a courtyard. On your left there is a marquee. In the marquee there will be people to meet and things to do.

THE GREAT
EXHIBITION
ROAD FESTIVAL



If you get a bit tired or need somewhere to sit there are lots of different seating all around the zone.

THE GREAT
EXHIBITION
ROAD FESTIVAL



Science Cabaret

The Science Cabaret stage is on the ground floor of the building and has performances throughout the day.

THE GREAT
EXHIBITION
ROAD FESTIVAL

The programme includes **science shows, music, dance workshops** and **quizzes**



Science Cabaret

The first activity on the Science Cabaret Stage on Sunday 7 June is **The Quantum Disco at 12.45pm.**

THE GREAT
EXHIBITION
ROAD FESTIVAL

In this workshop you will get to dance to music and learn about quantum.



The Science Cabaret stage continues all day until 18.00 and will get busier as the day goes on.

Beads and Biomes in the Union Bar

Inside the Union Bar, on the ground floor, there is a sewing activity about the vaginal microbiome with an artist and a friendly group of researchers from Imperial's Women's Health Research Network.

THE GREAT
EXHIBITION
ROAD FESTIVAL



You can access the first floor via the stairs or the lift in the ground floor foyer. Upstairs on the first floor you will find a room. If you go inside the room there will be people to meet and things to do.

THE GREAT
EXHIBITION
ROAD FESTIVAL



Bollywood Under the Stars

THE GREAT
EXHIBITION
ROAD FESTIVAL

A Bollywood dance workshop about star formation will take place on the first floor. The first workshop will take place at **12.30–1.10pm**. The workshop will include dancing to music. There can be loud sounds from the music at times.



There are men's and women's toilets around the zone.

There are also **accessible toilets** near the Science Cabaret stage and the Union Bar.

THE GREAT
EXHIBITION
ROAD FESTIVAL



We have places that you can buy **food and drink**. It can get a little busy in these areas and there will be lots of different food smells too.

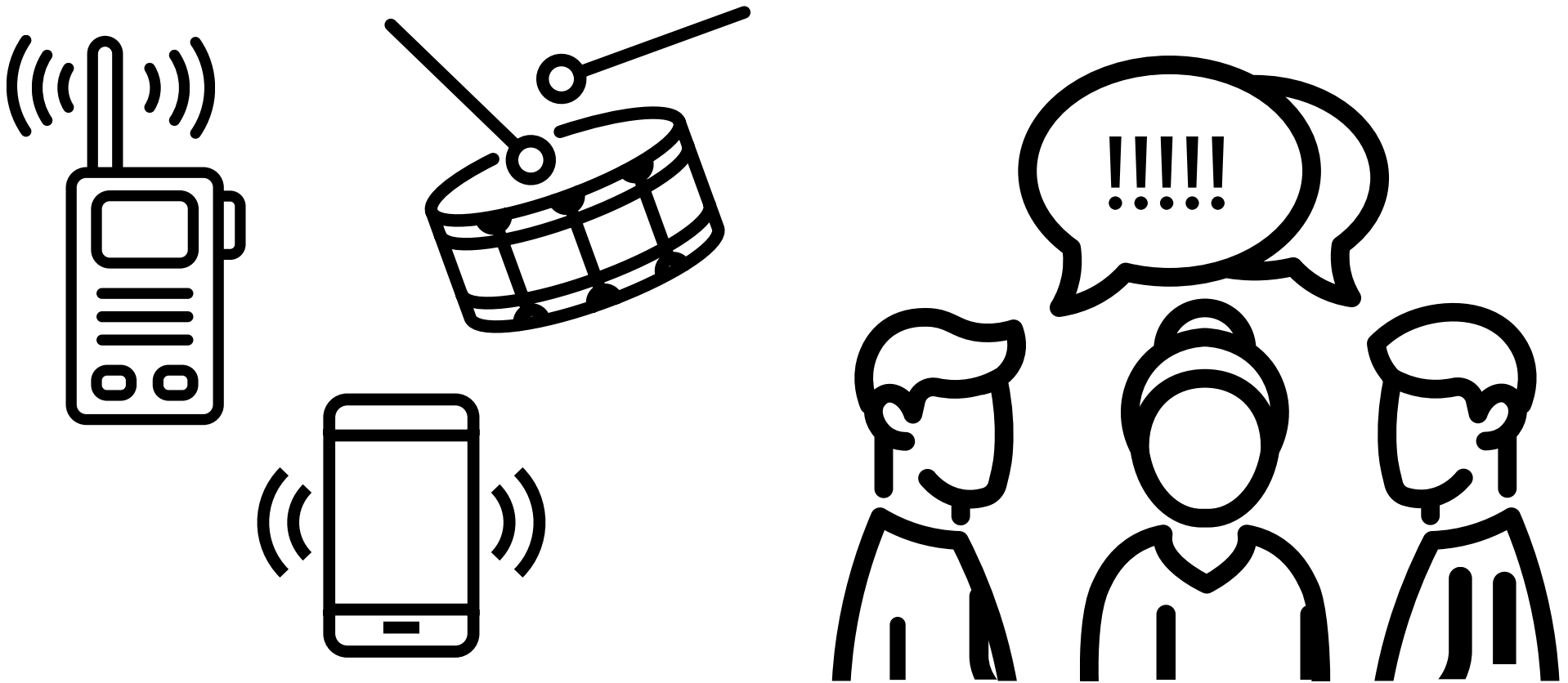
THE GREAT
EXHIBITION
ROAD FESTIVAL

If you get a thirsty there is a **water point** at the bar and also on the first floor of the building.



There are lots of noises at the festival. Here are some of the things that you might hear when you visit.

THE GREAT
EXHIBITION
ROAD FESTIVAL



If the Festival feels a bit much for you or becomes overwhelming, you can use the **quiet spaces**.

The closest Quiet Space is on the **second floor** of the building. You will find a sofa to sit on.

There are two sensory calm spaces that you can use in other areas of the Festival, both are about a 10 minute walk way.

They are in the **Family Fun Zone** (inside Kensington Gardens on East Albert Lawn) and near **Dangoor Plaza** (off Imperial College Road).

You will find seating, sensory items and bean bags inside a marquee in both these places.

There are lots of staff to help you when you visit.
They might be wearing a **pink jacket**.



Enjoy the Festival!

You can stay and do more activities when the relaxed session finishes.

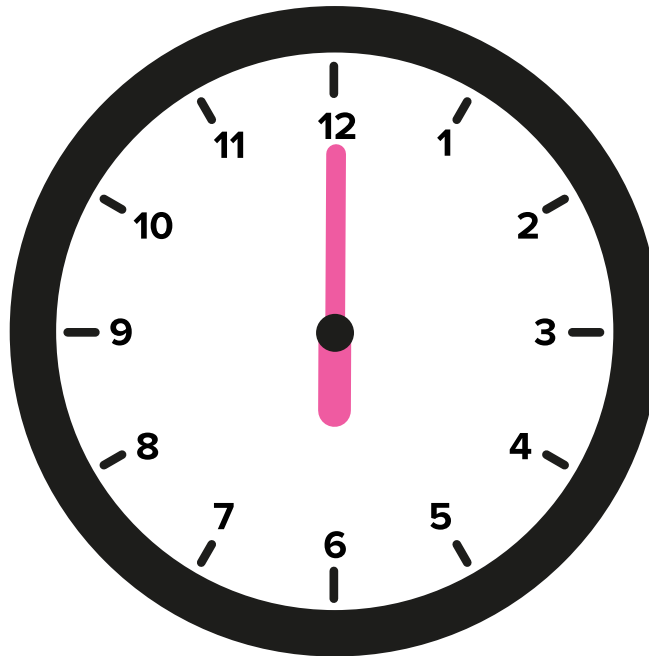
THE GREAT
EXHIBITION
ROAD FESTIVAL

At **1pm** the Festival will start to get busier as more people arrive. The Adults Only Zone will stay open until **6pm**.



The whole Festival also finishes at **6pm**.

THE GREAT
EXHIBITION
ROAD FESTIVAL



We hope you enjoy your visit to
The Great Exhibition Road Festival!